



**STATE CLEANING UP AFTER ANOTHER MAJOR WINTER STORM...  
TRAVEL REMAINS DIFFICULT ACROSS THE STATE...**

At 9:45 AM radar and surface observations showed that all accumulating snow has exited the state. Temperatures are currently in the upper 20's with Northwest Winds at 10 – 15 MPH across the state. Total snowfall now ranges from 7 inches in the NW Hills up to 19 inches in Southwestern CT, 15 inches in the Hartford area and up to 22 inches in Eastern CT (See preliminary snowfall totals below).

**Forecast for the Rest of Today...**

**This Morning:** Clearing skies with temperatures climbing slowly to the low 30's. The impact on the morning rush hour is forecast to be major with deep snow remaining on some roads and several road closures (which are expected to be cleared in the next several hours).

**This Afternoon:** Partly sunny and relatively mild with highs in the low 30's. Some melting of the snow is expected, however water on the roadways may re-freeze this evening. The impact on the afternoon rush hour is expected to be minor to moderate with narrow driving lanes and high snow banks obscuring visibility.

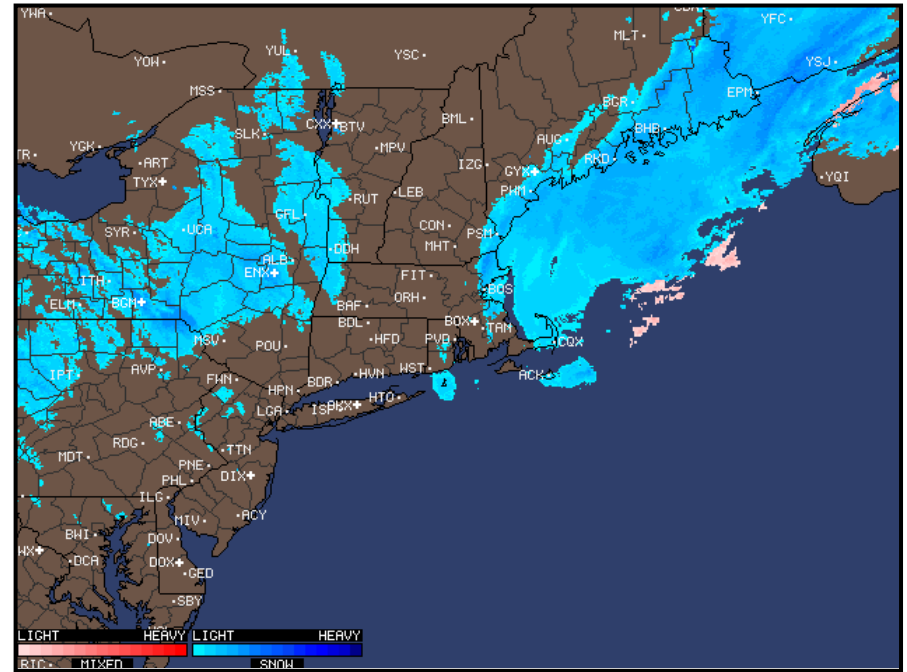
**Total Snowfall:** Storm total snowfall (including the burst of heavy snow yesterday morning along the coast) ranges from 5 – 9" of powdery snow in the NW Hills, 12 – 18" of snow in a band from Southwestern CT to Hartford to Northeastern CT, and 16 – 22" in a band from South Central CT to the Norwich area.

A final update on this storm will be issued by DEMHS at 11:00 AM.

Preliminary\* Storm Total Snowfall Amounts at Selected Sites:

Suffield	14.2"	Manchester	14.8"	Rocky Hill	12.5"
Staffordville	19"	Vernon	13"	West Norwalk	19"
Greenwich	14.5"	New Canaan	18"	Plainfield	22"
Danbury	15"	Shelton	15"	Middletown	15"
Old Saybrook	14"	Milford	16"	New Haven	14"
Colchester	17"	Lisbon	17.5"	Litchfield	7"
Tolland	16"				

\*Amounts are preliminary estimates and are likely to change once final totals are recorded.



**CURRENT RADAR PICTURE**

**WATCHES AND WARNINGS**

**Winter Storm Warnings**

None at this time.

**Winter Weather Advisories**

None at this time.

**Wind Advisories**

None at this time.

**Flood Watch**

None at this time.

*This product is a public service of the Department of Emergency Management and Homeland Security (DEMHS), and is intended for informational purposes only. DEMHS assumes no liability for the use or distribution of this product or any actions resulting from this product.*

**STATUS OF THE STATE  
EMERGENCY OPERATIONS  
CENTER**

**PARTIALLY  
ACTIVATED**